

**Supplements Contained in Custom Pak**

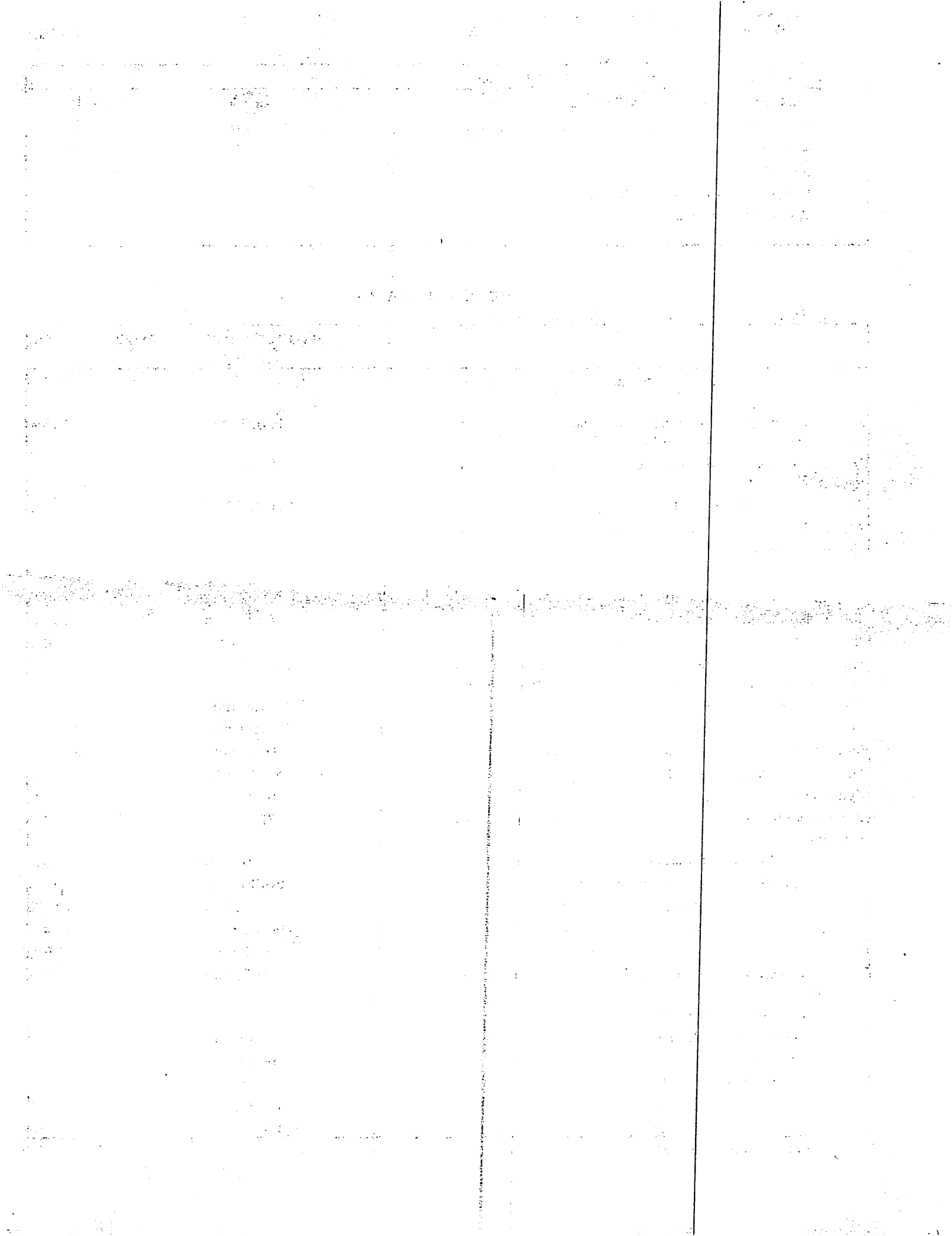
<b>DIETARY SUPPLEMENTS</b>	<b>QTY</b>	<b>TIME</b>
ACTIVE MULTINUTRIENTS W/O COPPER & IRON	60	DAILY
MAGNESIUM	30	DAILY
D3-K2 5,000	30	DAILY
OMEGA PRO MONOGLYCERIDE	60	DAILY
MAXPROBIOTIC 100	30	DAILY

**Supplement Facts**

Serving Size: 1 Day of Packets(Breakfast and Dinner)

	<b>Amount Per Serving</b>	<b>%Daily Value</b>
Vitamin A (75% as natural beta-carotene and 25% as retinyl palmitate)	1,120.00 mcg	124%
Vitamin C (as sodium ascorbate, potassium ascorbate, zinc ascorbate, and calcium ascorbate)	125.00 mg	138%
Calcium (as di-calcium malate, d-calcium pantothenate, and calcium ascorbate)	50.00 mg	3%
Vitamin D3 (cholecalciferol)	5,100.00 IU	1275%
Vitamin E (as d-alpha tocopheryl succinate)	67.00 mg	446%
Vitamin K2 (as menaquinone-7)	90.00 mcg	75%
Thiamin (as thiamine mononitrate)	10.00 mg	833%
Riboflavin (as riboflavin 5'-phosphate sodium)	10.00 mg	769%
Niacin (as niacinamide and niacin)	32.00 mg	200%
Vitamin B6 (as pyridoxal 5'-phosphate)	10.00 mg	588%
Folate (170 mcg DFE as (6S)-5-methyltetrahydrofolic acid, glucosamine salt and 170 mcg DFE as calcium folinate)	340.00 mcg	85%
Vitamin B12 (as methylcobalamin)	250.00 mcg	10416%
Biotin	500.00 mcg	1666%
Pantothenic Acid (as d-calcium pantothenate)	100.00 mg	2000%
Iodine (as potassium iodide)	50.00 mcg	33%
Magnesium (as di-magnesium malate)	50.00 mg	11%
Magnesium (as dimagnesium malate and magnesium lysinate glycinate)	125.00 mg	29%
Zinc (as zinc bisglycinate chelate)	6.50 mg	59%
Selenium (as selenium glycinate complex)	50.00 mcg	90%
Manganese (as manganese bisglycinate chelate)	0.25 mg	10%
Chromium (as chromium nicotinate glycinate chelate)	250.00 mcg	714%
Molybdenum (as molybdenum glycinate chelate)	25.00 mcg	55%
Potassium (as potassium glycinate complex and potassium ascorbate)	49.50 mg	1%
Choline (as choline dihydrogen citrate)	18.00 mg	3%
Bifidobacterium lactis HNO19	167.00 mg	**
DHA (docosahexaenoic acid)	260.00 mg	**
DPA (docosapentaenoic acid)	24.00 mg	**
EPA (eicosapentaenoic acid)	600.00 mg	**
MaxSimil® Fish Oil Concentrate	1,300.00 mg	**

\*\*Daily value not established



## Supplement Facts

Serving Size: 1 Day of Packets(Breakfast and Dinner)

	Amount Per Serving	%Daily Value
Inositol	18.00 mg	**
PABA (para-aminobenzoic acid)	12.00 mg	**
Proprietary Blend (Lactobacillus acidophilus La-14, Bifidobacterium longum BI-05, Lactobacillus plantarum Lp-115) (15 billion CFU)	409.00 mg	**
Total Omega-3 Fatty Acids	860.00 mg	**
Vanadium (as vanadium nicotinate glycinate chelate)	375.00 mg	**

\*\*Daily value not established

## Other Ingredients:

<b>OMEGA PRO MONOGLYCERIDE</b>	Softgel (fish gelatin, vegetable glycerin, and purified water), GRAS enteric coating (ethylcellulose, sodium alginate, purified water, medium-chain triglycerides, oleic acid, vegetable stearic acid, and ammonium hydroxide), and mixed natural tocopherols.#
<b>ACTIVE MULTINUTRIENTS W/O COPPER &amp; IRON</b>	Capsule (hypromellose and water), microcrystalline cellulose, ascorbyl palmitate, silica, medium-chain triglyceride oil, and mixed tocopherols.
<b>MAXPROBIOTIC 100</b>	HPMC (acid-resistant capsule), microcrystalline cellulose, magnesium stearate, and silica.
<b>D3-K2 5,000</b>	Capsule (hypromellose and water), microcrystalline cellulose, ascorbyl palmitate, and silica.
<b>MAGNESIUM</b>	.
<b>MAGNESIUM</b>	Capsule (hypromellose), hydroxypropyl cellulose, ascorbyl palmitate, microcrystalline cellulose, and silica.

**ALLERGY INFORMATION:** Manufactured on equipment that processes products containing fish, shellfish, egg, soy, milk, and tree nuts.

## Product Disclaimers:

\*OMEGA PRO MONOGLYCERIDE Contains: Fish (anchovy and/or sardine [sources of fish oil], tilapia and/or pangasius [sources of fish gelatin]).

Recommended use within 60 days of receipt